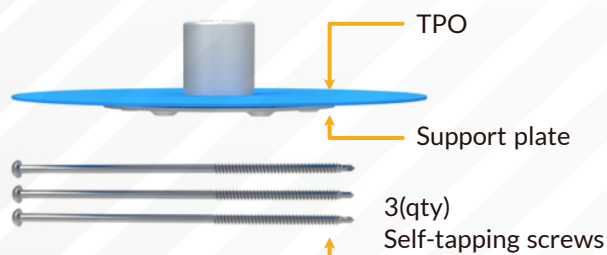


PRODUCT :



Screws available in 4 lengths:

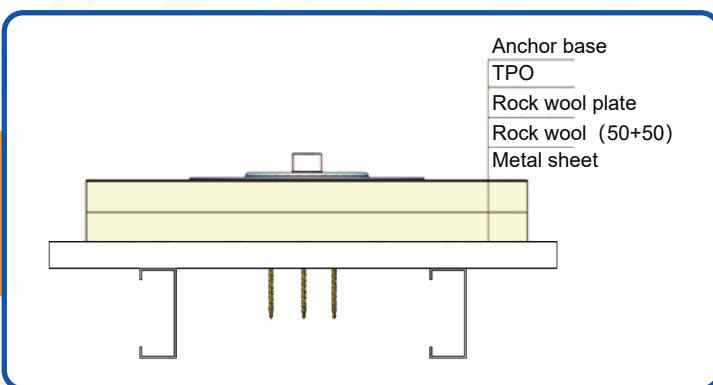
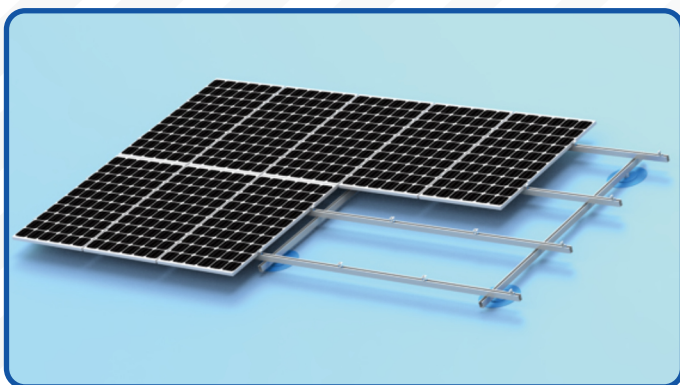
- 75mm or 2.95"
- 120mm or 4.72"
- 150mm or 5.90"
- 200mm or 7.87"

TPO Roof Anchor Base

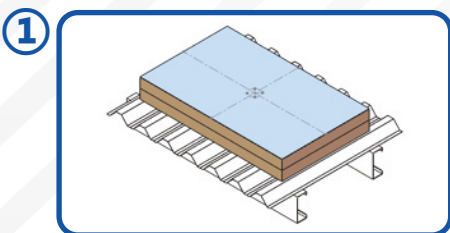
CHIKO's TPO anchor base is designed to be directly fixed on the TPO metal sheet or purlin which is suitable for a steel TPO roof.

BENEFITS :

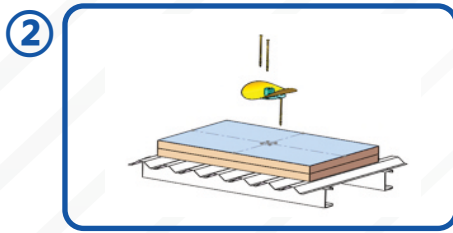
- Facilitates a simple, fast and cost-effective installation
- Designed to withstand the elements made of Aluminum with a high corrosion resistant surface treatment
- Better water proofing option than utilizing a fixed base solution
- Suitable for a wide variety of metal sheet roofing



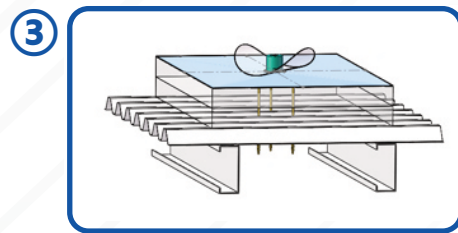
INSTALLATION STEPS :



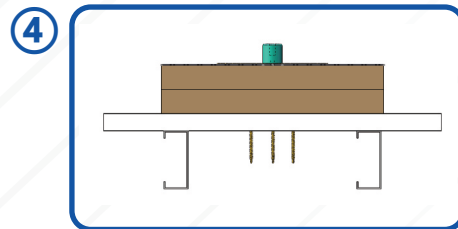
Mark the installation position of Anchor base on the roof



Drill self tapping screws at the specified position to fix the Anchor base on the roof



Anchor base apply hot welding to weld with the roof



Anchor base Installation complete

